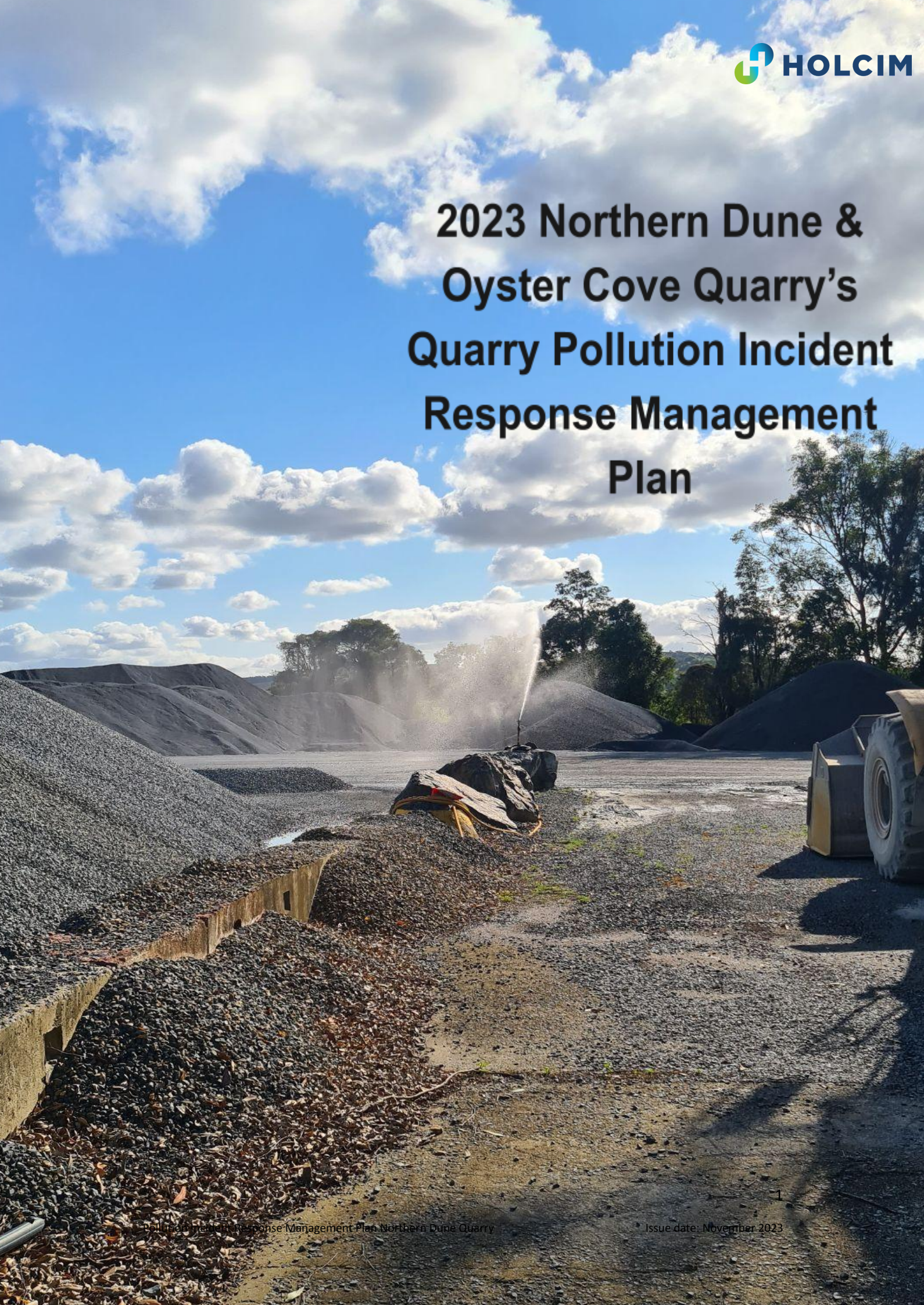


2023 Northern Dune & Oyster Cove Quarry's Quarry Pollution Incident Response Management Plan



Northern Dune & Oyster Cove Quarry's Pollution Incident Response Management Plan (PIRMP)

Revision/ Checking History

Revision Number	Date	Checked by	Issued by
1	30/10/2020	Shilpa Shashi – NSW/ACT Planning & Environment Coordinator Michael Lynch – HSEQ Coordinator Peter Radzievic – Quarry Manager	Shilpa Shashi
2	25/08/2021	Shilpa Shashi – NSW/ACT Planning & Environment Coordinator Michael Lynch – HSEQ Coordinator Peter Radzievic – Quarry Manager	Shilpa Shashi
3	06/07/2022	Shilpa Shashi – NSW/ACT Planning & Environment Coordinator Michael Lynch – HSEQ Coordinator Peter Radzievic – Quarry Manager	Shilpa Shashi
4	30/11/2022	Rob Townsend – Acting Environment Manager NSW Michael Lynch – HSEQ Coordinator Peter Radzievic – Quarry Manager	Rob Townsend
5	16/11/2023	Peter Radzievic – Quarry Manager	Dozie Egeonu

Flow Chart

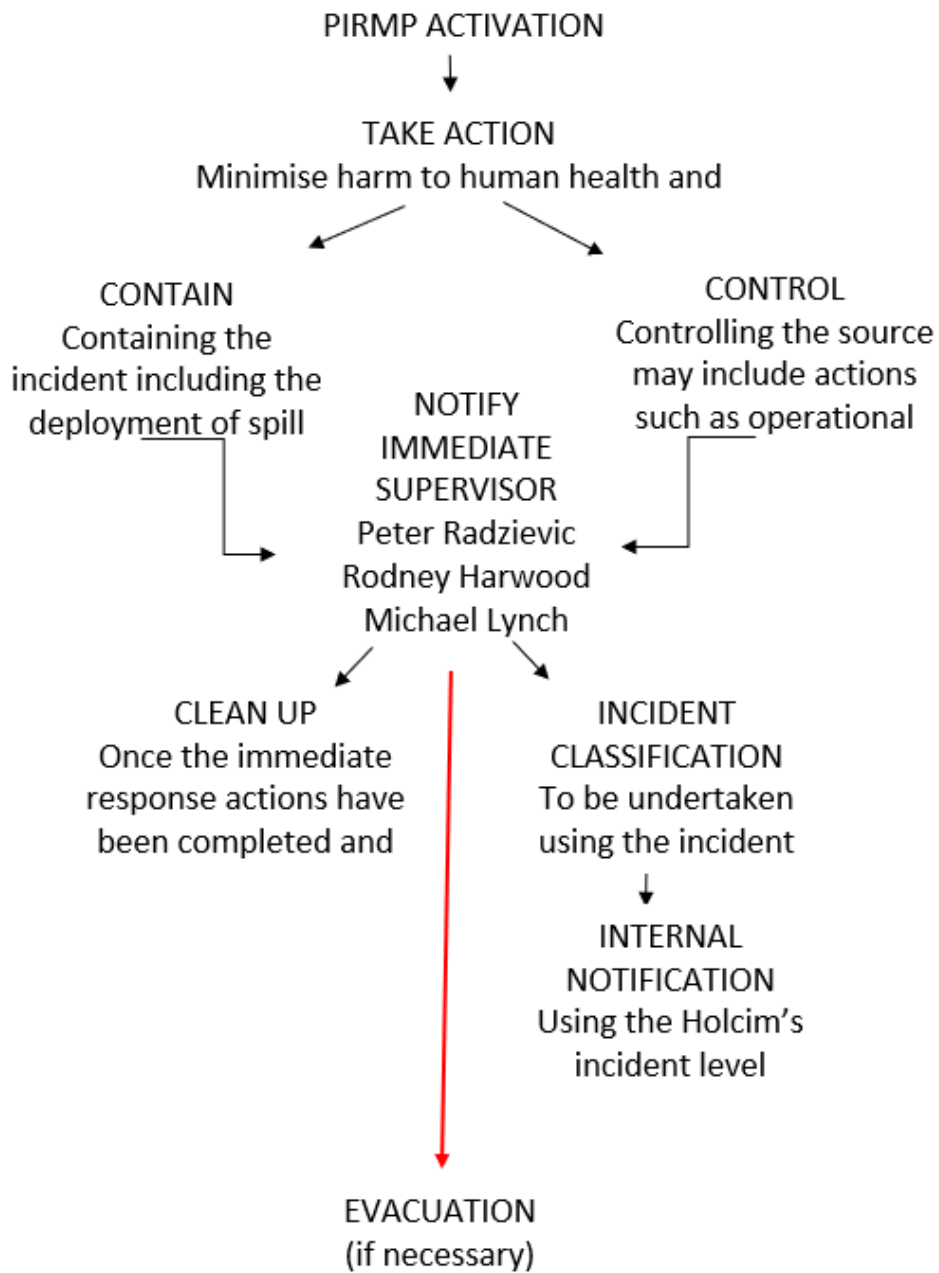


Table of Contents

1. Purpose	5
2. Scope	7
3. Definitions	7
4. Associated Documentation	7
5. Responsibility	7
6. Record Retention	8
7. Procedure	8
7.2 Environmental Impact and Hazard Register	8
7.3 Pollutant and Safety Equipment Information	16
7.4 Emergency Response Map	25
7.5 PIRMP Review	28
7.6 Typical Holcim Response process	28
7.6 Communication Strategy	31
8. Staff Training	32
9. Continual Improvement	32

Appendices

A	Emergency Contact Details
B	Pollution Incident Response Test Checklist
C	Community Notification Strategy

Glossary of Acronyms

PIDS- Pollution Information Data Sheet

PPE- Personal Protective Equipment

SDS- Safety Data Sheets

PEOA- Protection of the Environment Operations Act 1997

1. Purpose

The purpose of this document is to detail the pollution incident response management plan for the **Northern Dune Quarry**, to comply with Section 5.7A of the Protection of the Environment Operations (POEO) Act:

Protection of the Environment Operations Act 1997 No 156

Part 5.7A Duty to prepare and implement pollution incident response management plans

153A Duty of licence holder to prepare pollution incident response management plan

The holder of an environment protection licence must prepare a pollution incident response management plan that complies with this Part in relation to the activity to which the licence relates.

Maximum penalty:

- (a) *in the case of a corporation—\$1,000,000 and, in the case of a continuing offence, a further penalty of \$120,000 for each day the offence continues, or*
- (b) *in the case of an individual—\$250,000 and, in the case of a continuing offence, a further penalty of \$60,000 for each day the offence continues.*

153B EPA may direct other persons to prepare pollution incident response management plan

- (1) *The EPA may, in accordance with the regulations, require the occupier of premises at which industry is carried out to prepare a pollution incident response management plan that complies with this Part in relation to activities at the premises.*
- (2) *A person must not fail to comply with such a requirement.*

Maximum penalty:

- (a) *in the case of a corporation—\$1,000,000 and, in the case of a continuing offence, a further penalty of \$120,000 for each day the offence continues, or*
- (b) *in the case of an individual—\$250,000 and, in the case of a continuing offence, a further penalty of \$60,000 for each day the offence continues.*
- (3) *The regulations may make provision for or with respect to:*
 - (a) *the class or classes of premises, or industries carried out at premises, that may be the subject of a requirement to prepare a pollution incident response management plan, and*
 - (b) *the circumstances in which some or all premises within those classes may be the subject of a requirement to prepare a pollution incident response management plan.*

153C Information to be included in plan

A pollution incident response management plan must be in the form required by the regulations and must include the following:

- (a) *the procedures to be followed by the holder of the relevant environment protection licence, or the occupier of the relevant premises, in notifying a pollution incident to:*

- (i) *the owners or occupiers of premises in the vicinity of the premises to which the environment protection licence or the direction under section 153B relates, and*
- (ii) *the local authority for the area in which the premises to which the environment protection licence or the direction under section 153B relates are located and any area affected, or potentially affected, by the pollution, and*
- (iii) *any persons or authorities required to be notified by Part 5.7,*
- (b) *a detailed description of the action to be taken, immediately after a pollution incident, by the holder of the relevant environment protection licence, or the occupier of the relevant premises, to reduce or control any pollution*
- (c) *the procedures to be followed for co-ordinating, with the authorities or persons that have been notified, any action taken in combating the pollution caused by the incident and, in particular, the persons through whom all communications are to be made,*
- (d) *any other matter required by the regulations.*

153D Keeping of plan

A person who is required to prepare a pollution incident response management plan under this Part must ensure that it is kept at the premises to which the relevant environment protection licence relates, or where the relevant activity takes place, and is made available in accordance with the regulations.

Maximum penalty:

- (a) *in the case of a corporation—\$1,000,000 and, in the case of a continuing offence, a further penalty of \$120,000 for each day the offence continues, or*
- (b) *in the case of an individual—\$250,000 and, in the case of a continuing offence, a further penalty of \$60,000 for each day the offence continues.*

153E Testing of plan

A person who is required to prepare a pollution incident response management plan under this Part must ensure that it is tested in accordance with the regulations.

Maximum penalty:

- (a) *in the case of a corporation—\$1,000,000 and, in the case of a continuing offence, a further penalty of \$120,000 for each day the offence continues, or*
- (b) *in the case of an individual—\$250,000 and, in the case of a continuing offence, a further penalty of \$60,000 for each day the offence continues.*

153F Implementation of plan

If a pollution incident occurs in the course of an activity so that material harm to the environment (within the meaning of section 147) is caused or threatened, the person carrying on the activity must immediately implement any pollution incident response management plan in relation to the activity required by this Part.

Maximum penalty:

(a) *in the case of a corporation—\$2,000,000 and, in the case of a continuing offence, a further penalty of \$240,000 for each day the offence continues, or*

(b) *in the case of an individual—\$500,000 and, in the case of a continuing offence, a further penalty of \$120,000 for each day the offence continues.*

2. Scope

The scope of this management plan includes:

- Pollution Incident Response Management Plan (PIRMP) for environmental pollution generated at the **Northern Dune Quarry**.

3. Definitions

Pollution Incident - An incident or set of circumstances during or as a consequence of which there is or is likely to be a leak, spill or other escape or deposit of a substance, as a result of which pollution has occurred, is occurring or is likely to occur. It includes an incident or set of circumstances in which a substance has been placed or disposed of on premises, but it does not include an incident or set of circumstances involving only the emission of any noise.

Material Harm -(i) it involves actual or potential harm to the health or safety of human beings or to ecosystems that is not trivial, or

(ii) it results in actual or potential loss or property damage of an amount, or amounts in aggregate, exceeding \$10,000 (or such other amount as is prescribed by the regulations), It does not matter that harm to the environment is caused only in the premises where the pollution incident occurs, and

Loss - the reasonable costs and expenses that would be incurred in taking all reasonable and practicable measures to prevent mitigate or make good harm to the environment.

4. Associated Documentation

- Protection of the Environment Operations Act 1997
- Protection of the Environment (General) Amendment (Pollution Incident Response Management Plans) Regulation 2012
- Appendix A: Emergency Contact Details
- Appendix B: Pollution Incident Response Test Checklist
- Appendix C: Community Notification Strategy

5. Responsibility

The following personnel are responsible for the PIRMP;

- 1) Activating the plans and managing the response: **Peter Radziewicz** - Quarry Manager
- 2) Notifying and coordinating relevant authorities: **Peter Radziewicz** – Quarry Manager
- 3) Implementation and management of this document: NSW/ACT Planning & Environment Coordinator
- 4) Annual review and testing of PIRMP – **Peter Radziewicz** – Quarry Manager
- 5) Record Retention

A copy of all Quarry pollution incident response records will be retained on site in accordance with SHE guideline 1.4 – Administrative and Legal Requirements. A copy will also be saved electronically on Google Drive under “Site PIMRPs 2022” and Northern Dune Quarry Site folder.

6. Record Retention

Records must be made available to EPA officers and any person responsible for the PIRMP.

7. Procedure

The following section outlines the management procedures for pollution incident response management. The protocol is split into three sections:

- 1) Key environmental hazards and mitigation measures
- 2) Pollutant and Safety equipment information and management of Pollution Incidents
- 3) Emergency Response Maps

7.1 Environmental Impact and Hazard Register

In order to effectively plan for a potential pollution event, a register of environmental hazards has been created. Each hazard has been assessed in accordance with the Holcim SHE Risk Assessment tool (see Table 1 below).

The hazards have been grouped according to the area of environmental impact. By identifying these hazards ahead of time, mitigation measures can be identified and implemented through site procedures to minimise the risk of a pollution event occurring (table 2 below).

Table 1: Holcim SHE Risk Score Matrix – Attachment 6.2F

Step 1 - Consider the Consequence					
What are the consequences of the most reasonable worst case scenario considering a credible failure of existing controls?					
Consequence	Disaster	Severe	Serious	Significant	Minor
Environment On Site & Off Site	Major event, unconfined impact, severe permanent damage with low likelihood of recovery.	Significant permanent damage; reversible damage with recovery time of years; high potential for prosecution	Minor permanent damage; temporary damage that is widespread or that has moderate impact	Damage that is near source confined, temporary and minor	No measurable damage to environment
Compliance With Legal and Other Requirements	Blatant or serious breach of legal requirement, leading to operation being suspended or severely reduced. Prosecution expected.	Breach of external requirement (license, legislation, regulation, contract etc) with high potential for prosecution and/or high impact.	Non-compliance with external requirement with moderate potential for impact.	Repeated non-compliance with internal procedure, non-compliance with external requirement with low potential impact	Minor non-compliance with internal procedures.
Community Perception and Reputation	Significant adverse media attention (state or national level), loss of reputation or work nationally or across product groups.	Prosecution, significant impacts on social license to operate, loss of reputation or ability to secure work across product groups.	Local adverse media attention, loss of reputation or ability to secure work in local area, complaints that result in changes to external requirements.	Multiple community complaints or complaints that require changes to internal operating procedures.	Community complaint resolved with no changes to existing operating procedures.

Note: Temporary environmental damage has a duration of up to approximately one week to rectify

Step 2 - Consider the Likelihood					
What is the likelihood that the proposed consequence will occur with a credible failure of existing controls?					
Likelihood	Certain	Likely	Possible	Unlikely	Rare
Description	Event that is expected to occur on multiple occasions	Event that is likely to occur at least once	Event that may occur	Event that is unlikely to occur	Event that may occur only in exceptional circumstances
Frequency	Event is likely to occur more than twice a year.	Event is likely to occur once or twice a year.	Event is likely to occur more than once or twice in a 10 year period	Event is likely to occur once or twice in a 10 year period	Event is likely to occur once or twice in a 100 year period

Table 2: Holcim SHE Likelihood & Risk Score Matrix

Step 3 - Determine Risk Rating from the Risk Matrix					
Consequences					
RISK RATING	5. Disaster	4. Severe	3. Serious	2. Significant	1. Minor
A. Certain	HIGH	HIGH	HIGH	MEDIUM	MEDIUM
B. Likely	HIGH	HIGH	MEDIUM	MEDIUM	LOW
C. Possible	HIGH	MEDIUM	MEDIUM	LOW	LOW
D. Unlikely	MEDIUM	MEDIUM	LOW	LOW	LOW
E. Rare	MEDIUM	LOW	LOW	LOW	LOW

Table 3: Holcim Quarry Environmental Impact and Hazard Register

Key Environmental Hazards	Risk			Mitigation Measures	Revised Risk		
	L	C	R		L	C	R
Air Quality							

Key Environmental Hazards		Risk			Mitigation Measures	Revised Risk		
		L	C	R		L	C	R
1	Excessive dust emissions	P o s s i b l e	S e r i o u s	M e d i u m	<ul style="list-style-type: none"> ▪ Complete monitoring & assess results monthly ▪ Review results & monitoring program quarterly ▪ Water carts/spraying ▪ Apply crusting agents to surface of stockpiles of fine materials ▪ Minimise disturbed areas ▪ Stop dust generating activities as necessary ▪ Progressively rehabilitate disturbed areas ▪ Modify works during periods of high wind ▪ Dust minimisation training ▪ Maintenance of dust control equipment ▪ Engineering controls for discharge of fine materials to stockpiles ▪ Engineering controls for dust emissions from the material processing plant 	U n l i k e l y	S i g n i f i c a n t	L o w

Key Environmental Hazards		Risk			Mitigation Measures	Revised Risk		
		L	C	R		L	C	R
2	Health issues off site	R a r e	S e v e r e	L o w	<ul style="list-style-type: none"> ▪ As per (1) ▪ Complaints hotline ▪ Assess monitoring results 	R a r e	S e r i o u s	L o w
Groundwater								

Key Environmental Hazards		Risk			Mitigation Measures	Revised Risk		
		L	C	R		L	C	R
1	Groundwater contamination	U n l i k e l y	S e r i o u s	L o w	<ul style="list-style-type: none"> ▪ Implement Monitoring and response plan ▪ Review monitoring results annually & action as necessary ▪ Ensure storage, handling and transport of dangerous goods are conducted in accordance with Australian Standards ▪ Identify, classify, quantify & appropriately store hazardous waste ▪ Develop & implement oil & fuel spillage controls ▪ Ensure hazardous waste is minimised ▪ Licenced contractors to remove hazardous waste from site ▪ Keep records of all hazardous waste movements ▪ Implement bunding to appropriate areas ▪ Ensure adequate spill kits are available on site including adequate training ▪ Minimise hazardous waste storage quantities on site 	R a r e	S e r i o u s	L o w

Key Environmental Hazards		Risk			Mitigation Measures	Revised Risk		
		L	C	R		L	C	R
2	Lowering of groundwater table	R a r e	S e r i o u s	L o w	<ul style="list-style-type: none"> Monitor & report on ground water levels Comply with Water Management Plan water balance 	R a r e	S i g n i f i c a n t	L o w
Ecology								
1	Damage to local flora	P o s s i b l e	S e r i o u s	M e d i u m	<ul style="list-style-type: none"> Develop & implement Rehabilitation and Landscape Management Plan Monitor & report on site flora health as per consent requirements Suitable training regarding flora protection Removal of stock from sensitive areas Implement bushfire hazard reduction tasks Removal of feral animals from sensitive areas Noxious weed control in sensitive areas 	U n l i k e l y	S i g n i f i c a n t	L o w

Key Environmental Hazards		Risk			Mitigation Measures	Revised Risk		
		L	C	R		L	C	R
2	Damage to site fauna	U n l i k e l y	S e r i o u s	L o w	<ul style="list-style-type: none"> As per 1 Information regarding local WIRES for distressed or injured fauna Reporting on fauna deaths Three yearly monitoring 	R a r e	S e r i o u s	L o w
Land								
1	Spill of liquid fuel, oils, chemicals etc whilst in storage	P o s s i b l e	S e v e r e	M e d i u m	<ul style="list-style-type: none"> Fuels, oils, chemicals etc stored according to Holcim's bunding requirements. Measures in place to ensure spills do not leave site boundaries i.e. diverting flow away from boundaries, stormwater drains. Bunding subject to regular inspection and maintenance 	S i g n i f i c a n t	U n l i k e l y	L o w

Key Environmental Hazards		Risk			Mitigation Measures	Revised Risk		
		L	C	R		L	C	R
2	Spill during delivery of fuel to mobile equipment	P o s s i b l e	S e v e r e	M e d i u m	<ul style="list-style-type: none"> ▪ Breakaway couplings installed on mobile fuel delivery vehicles. ▪ Drivers stay with vehicle during refuelling ▪ Emergency spill kits located on fuel delivery vehicles. ▪ Spill response equipment is regularly inspected and maintained ▪ Mobile refuelling takes place in the pit or in designated areas ▪ Drivers trained in spill response procedures. 	U n l i k e l y	S i g n i f i c a n t	L o w
3	Spill during delivery of fuel to storage tank	P o s s i b l e	S e v e r e	M e d i u m	<ul style="list-style-type: none"> ▪ Supplier's fuel transfer procedure is known ▪ Fuel transfer is supervised against suppliers' procedure 	U n l i k e l y	S i g n i f i c a n t	L o w

Key Environmental Hazards		Risk			Mitigation Measures	Revised Risk		
		L	C	R		L	C	R
4	Land contamination	Likely	Significant	Medium	<ul style="list-style-type: none"> Holcim land contamination strategy is known and applied 	Unlikely	Significant	Low
5	Spill from train locomotive fuelling and operations	Possible	Severe	Medium	<ul style="list-style-type: none"> Breakaway couplings installed on fuel delivery devices. Drivers stay with locomotive during refuelling Emergency spill kits located at fuel delivery locations. Spill response equipment is regularly inspected and maintained Refuelling takes place over bunded area only Drivers trained in spill response procedures. 	Unlikely	Significant	Low

7.2 Pollutant and Safety Equipment Information

Legislative requirements under the Protection of the Environment Operations (POEO) Act dictate that the site is to provide information for all pollutants that are used and stored on the site. This information is required as it assists personnel responsible for coordinating spill responses to more effectively manage spills.

This information must be presented as a manifest detailing the pollutants stored at the site, the location of these storage areas, and the safety equipment to be made available at these areas. A Pollution Information Data Sheet (PIDS) has been prepared that includes the following information for each pollutant:

- The intended use for the pollutant
- How is the pollutant stored?
- SDS information
- Safety equipment or other devices that are used to minimise the risks to human health or the environment and to contain or control a pollution incident
- PPE needed to safely manage a spill of the pollutant
- Procedure for cleaning up a spill of the pollutant.

Refer to table 4 below for detail. In order to ensure the currency and reliability of the information in the PIDS, the information should be reviewed and updated on a monthly basis.

Table 4: Pollutant Information Data Sheet

Pollutant	Storage Location	Current SDS held Yes/No	Emission control equipment ⁽¹⁾	PPE ⁽¹⁾	Spill Clean Up Method ⁽¹⁾
Fuel	No fuel kept on site, refueling done off site.	Yes	Sand, earth,	PVC gloves, safety glasses, goggles	<p><u>Large Spill</u></p> <p><u>Assess</u></p> <p>Quickly assess the spill:</p> <p>Decide whether to handle the situation by yourself or if you require help.</p> <p>Advise your team of the hazard</p> <p>Post a guard or barricade</p> <p>Can you stop the source of the spill?</p> <p><u>Ensure Personal Safety</u></p> <p>First priority is to ensure safety of yourself and others in the area</p> <p>Consider evacuation and isolation.</p> <p>Do you or others require PPE</p> <p>Check Safety Data Sheet</p> <p><u>Secure</u></p> <p>Secure the spill</p> <p>If hazardous to public or other staff exists</p> <p>Post a guard immediately</p> <p>Enter barricades to prevent unintended access</p>

Pollutant	Storage Location	Current SDS held Yes/No	Emission control equipment ⁽¹⁾	PPE ⁽¹⁾	Spill Clean Up Method ⁽¹⁾
					<p><u>Contain</u></p> <p>Contain the spill quickly by surrounding with the booms which should be firmly secured in place. Find the source of the leak and stop it</p> <p>Emergency stop, cap, plug, move, adjust Move other containers from that area to a bunded area In the case of spillage on water, prevent the spread of product by the use of suitable barrier equipment.</p> <p><u>Prevent</u></p> <p>Prevent spillage to stormwater drains and entry into sewer, water courses, basements or confined areas.</p> <p><u>Absorb</u></p> <p>Contain and collect spillage with non-combustible, absorbent material e.g. sand, earth, vermiculite or diatomaceous earth and place into a container according to local legislation.</p> <p>Recover product from the surface.</p> <p>Use spark-proof tools and explosive proof equipment. Dispose of via a licensed waste disposal contractor</p>

Pollutant	Storage Location	Current SDS held Yes/No	Emission control equipment ⁽¹⁾	PPE ⁽¹⁾	Spill Clean Up Method ⁽¹⁾
					<p><u>Disposal</u></p> <p>Contain and collect spillage with non-combustible, absorbent material e.g. sand, earth, vermiculite or diatomaceous earth and place into a container according to local legislation.</p> <p>Use spark-proof tools and explosive proof equipment. Dispose of via a licensed waste disposal contractor.</p> <p>Contaminated absorbent material may pose the same hazard as the spilt product. Monitor its disposal. The spill soiled bags need to be labelled and ear marked and placed in a leak proof container which is locked. SDS should be made available.</p> <p><u>Reporting</u></p> <p>Incident and Corrective and Preventive action should be captured on the ICARE.</p> <p><u>Small Spill</u></p> <p>Stop leak without risk.</p> <p>Move containers from spill area</p> <p>Absorb with an inert material and place it in the appropriate waste disposal container.</p>

Pollutant	Storage Location	Current SDS held Yes/No	Emission control equipment ⁽¹⁾	PPE ⁽¹⁾	Spill Clean Up Method ⁽¹⁾
					Use spark-proof tools and explosion-proof equipment. Dispose of via a licensed waste disposal contractor.
Vehicle fluids	No fluids kept on site, fluid levels checked at machine pre-start which is conducted off site.	Yes	Sand, earth, vermiculite	PVC Gloves, safety glasses	<p><u>Large Spill</u></p> <p><u>Assess</u></p> <p>Quickly assess the spill:</p> <p>Decide whether to handle the situation by yourself or if you require help. Advise your team of the hazard Post a guard or barricade Can you stop the source of the spill?</p> <p><u>Ensure Personal Safety</u></p> <p>First priority is to ensure safety of yourself and others in the area Consider evacuation and isolation. Do you or others require PPE Check Safety Data Sheet</p> <p><u>Secure</u></p>

Pollutant	Storage Location	Current SDS held Yes/No	Emission control equipment ⁽¹⁾	PPE ⁽¹⁾	Spill Clean Up Method ⁽¹⁾
					<p>Secure the spill If hazardous to public or other staff exists Post a guard immediately Enter barricades to prevent unintended access</p> <p><u>Contain</u></p> <p>Contain the spill quickly by surrounding with the booms which should be firmly secured in place. Find the source of the leak and stop it Emergency stop, cap, plug, move, adjust Move other containers from that area to a bunded area</p> <p>In the case of spillage on water, prevent the spread of product by the use of suitable barrier equipment.</p> <p><u>Prevent</u></p> <p>Prevent spillage to stormwater drains and entry into sewer, water courses, basements or confined areas.</p> <p><u>Absorb</u></p> <p>Contain and collect spillage with non-combustible, absorbent material e.g. sand, earth, vermiculite or</p>

Pollutant	Storage Location	Current SDS held Yes/No	Emission control equipment ⁽¹⁾	PPE ⁽¹⁾	Spill Clean Up Method ⁽¹⁾
					<p>diatomaceous earth and place into a container according to local legislation.</p> <p>Recover product from the surface.</p> <p>Use spark-proof tools and explosive proof equipment. Dispose of via a licensed waste disposal contractor</p> <p><u>Disposal</u></p> <p>Contain and collect spillage with non-combustible, absorbent material e.g. sand, earth, vermiculite or diatomaceous earth and place into a container according to local legislation.</p> <p>Use spark-proof tools and explosive proof equipment. Dispose of via a licensed waste disposal contractor.</p> <p>Contaminated absorbent material may pose the same hazard as the spilt product. Monitor its disposal. The spill soiled bags need to be labelled and ear marked and placed in a leak proof container which is locked. SDS should be made available.</p> <p><u>Reporting</u></p>

Pollutant	Storage Location	Current SDS held Yes/No	Emission control equipment ⁽¹⁾	PPE ⁽¹⁾	Spill Clean Up Method ⁽¹⁾
					<p>Incident and Corrective and Preventative action should be captured on the ICARE.</p> <p>Small Spill</p> <p>Stop leaking without risk.</p> <p>Move containers from spill area</p> <p>Dilute with water and mop up, or absorb with an inert dry material and place in appropriate waste disposal container</p> <p>Dispose of via a licensed waste disposal contractor.</p>
Effluent	Effluent discharge is confined to the area of discharge or leak. Northern Dune & Oyster Cove sites do not have drainage or council	No	Access to council or commercial vacuum/ pump truck, soil, sand, bleach, hydrated lime	PVC Gloves, goggles, overalls	<p><u>Accidental Release Measures</u></p> <p>1) Contaminated areas must be clearly marked or cordoned off to restrict access.</p> <p>2) Protective clothing should be worn when cleaning up a sewage spill.</p> <p>3) If the spilled material can't be recovered using hand tools, a commercial vacuum / pump truck should be called to remove all visible liquid and solid material.</p>

Pollutant	Storage Location	Current SDS held Yes/No	Emission control equipment ⁽¹⁾	PPE ⁽¹⁾	Spill Clean Up Method ⁽¹⁾
	sewage system. Any discharge is confined to the site area				4) When the area is visibly clean, either a chlorine / water solution or hydrated lime should be applied to the spill area to disinfect. 5) If a major spill has occurred hydrated lime should be applied to the area in place of chlorine bleach 6) Enough hydrated lime should be applied to raise the pH to at least 12. By raising the pH to 12 for at least 1 hour, the area will be disinfected. 7) Because lime is a caustic material, access to the area treated with lime must be restricted during the disinfection period.

⁽¹⁾ This information should be drawn from a review of the SDS or manufacturer / supplier technical information

7.3 Emergency Response Map

In addition to the PIDS the site needs to prepare an emergency response map that provides the following information:

- address of site
- location of pollutant storage
- location of safety equipment
- emergency evacuation / muster points
- stormwater drains / flow paths
- sensitive receivers
- sediment dam overflow locations
- location of SDS
- surrounding area that is likely to be affected by a pollution incident
- discharge location of stormwater drains to nearest water course or water body

Existing site maps that have been developed to comply with Holcim SHE system requirement 1.84 may be used if all the required items have been included. If an existing map is not available, it should be created.

It is important to clearly identify these items so as to be able to respond in an emergency situation.

Site Maps

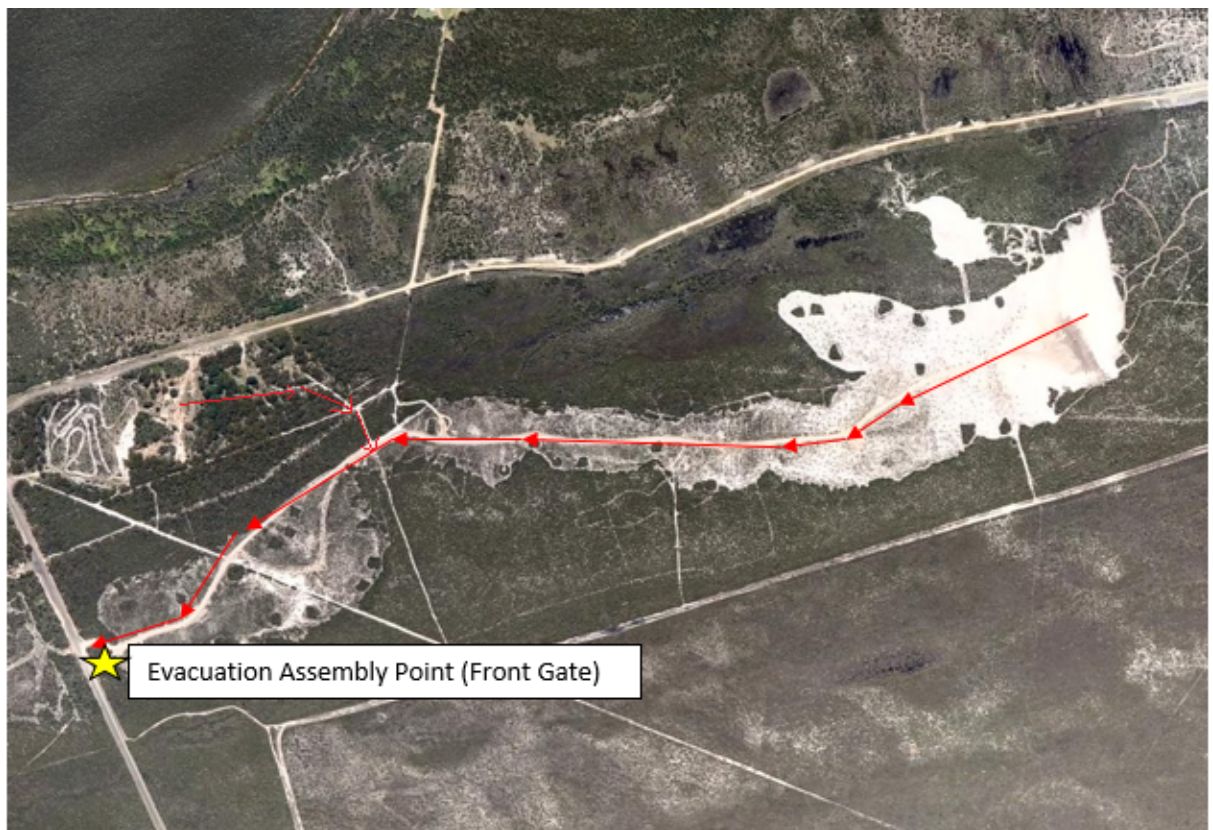


Figure 1: Northern Dune site Plan

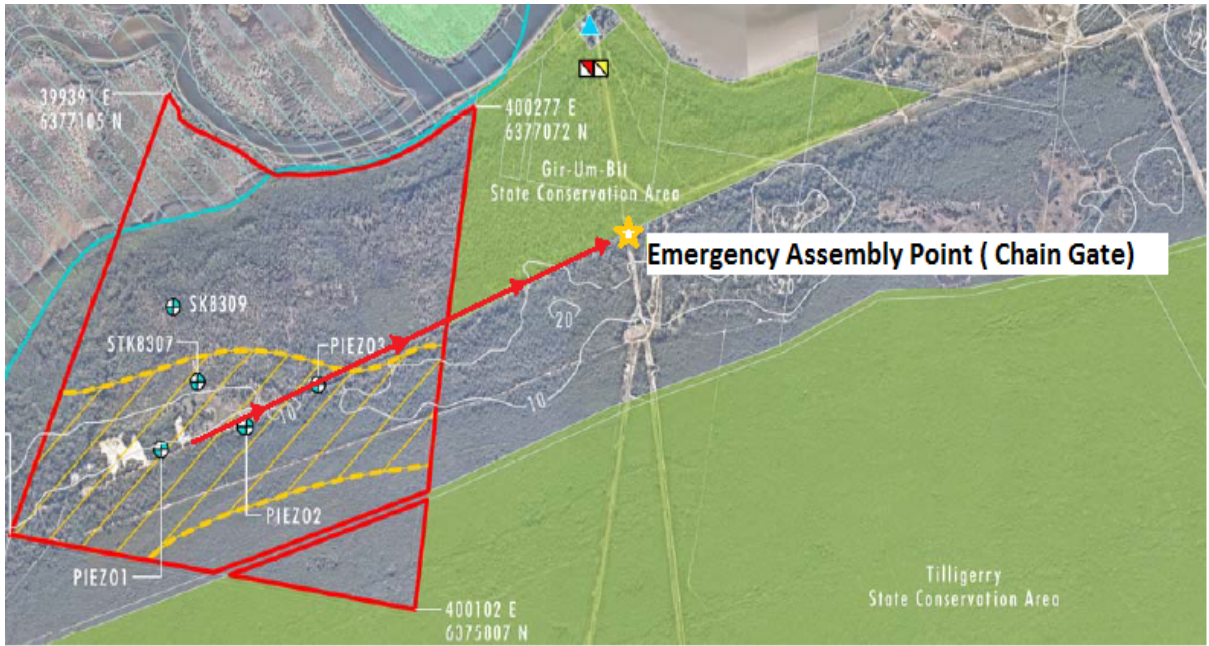


Figure 2: Oyster Cove Site Plan

7.4 PIRMP Review

Review of PIRMP will be undertaken to check that the information is accurate and current and that the plan is capable of being implemented in a workable and effective manner.

Reviewing shall be undertaken in the following ways:

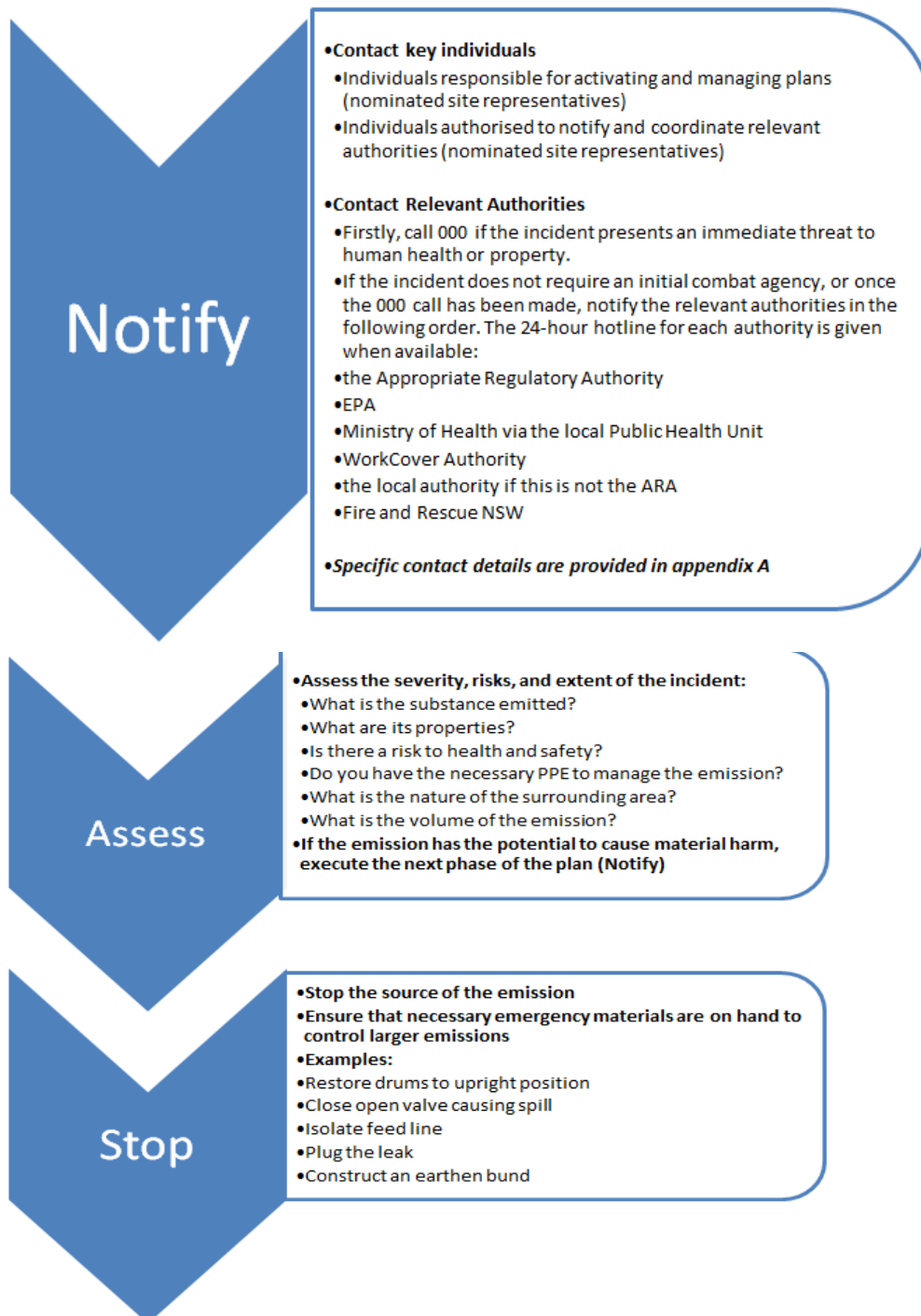
- The PIRMP will be tested annually and any identified updates or changes will be made
- The PIRMP will be tested and reviewed within one month from the date of any pollution event that triggers this PIRMP
- The review will also consist of assessment of any additional hazards and control measures
- In addition to site evacuation drills, a mock environmental incident will be done once a year to ensure all site personnel are following training and correct procedures. The mock scenario will be set and all the actions will be captured on the check sheet. Based on these mock incidents, the Site manager and the Environmental Coordinator will review the site personnel preparedness and site procedures to identify gaps or areas for improvement. Records of the drill will be maintained, including follow up of opportunities for improvement identified during emergency drills.

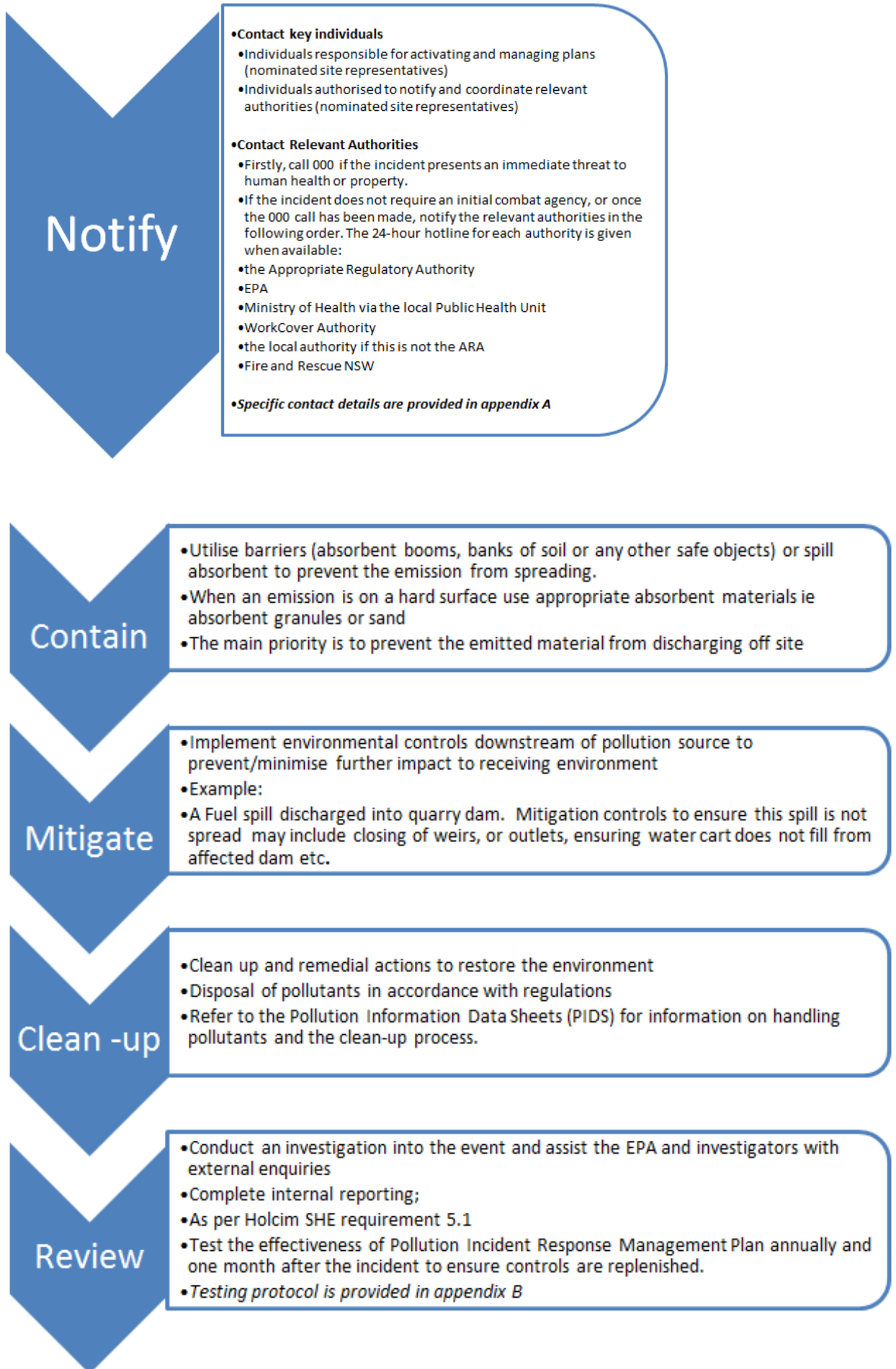
7.5 Typical Holcim Response process

If it is suspected that an incident may cause material environmental harm the Pollution Incident Management Response Plan will be executed. This plan is based on seven phases:

- 1) Assess
- 2) Stop
- 3) Notify
- 4) Contain
- 5) Mitigate
- 6) Clean up
- 7) Review

Details of the requirements and responsibilities for each phase are explained in the following page.





7.6 Communication Strategy

It is a legal requirement of the Protection of the Environment Operations (POEO) Act, to notify key stakeholders in neighbouring properties that may have been affected by an incident.

Communicating with neighbours and the community in the event of a spill is vital as they have a right to know about any spill that can potentially lead to material harm to their properties or themselves. The communication strategy in the PIRMP provides sites with a method of communicating with key stakeholders.

Key stakeholders can include neighbouring residential and/or commercial properties, sensitive receivers i.e. farms, hospitals, schools etc. Consideration must be given to sensitive receivers that may be affected if the emission reaches a water body. For example, a farmer that is cultivating crops down river from your site will need to be informed of a spill to prevent him spraying his crops with polluted irrigation water.

The PIRMP must include details of the mechanisms that will be used for providing early warnings and regular updates to the owners and occupiers of premises who may be affected by an incident occurring at the premises.

The communication strategy should also make reference to any actions or arrangements that will be in place to minimise the risk of harm to any persons who will be on the premises or who are likely to be on the premises at the time of an incident. This is a legislative requirement that needs to be included in the PIRMP.

For a table detailing the communication strategy for this site:

Refer to Appendix C – Community Notification Strategy

8. Staff Training

Sites need to develop a toolbox talk based on the PIRMP. This training should be delivered to all appropriate personnel on site.

Frequency of training

Training should be repeated annually, and after each update.

How Records of training are kept

Training records should be stored on site and in the Chris 21 database. The records are to be made available to relevant authorities on request.


9. Continual Improvement

It is a legislative requirement for this plan to be tested and updated on an annual basis and within one month of an incident.

To complete this requirement a Pollution Incident Response Test Checklist has been prepared and provided as Appendix B. The checklist includes the major elements of the plan that require testing:

- Contact numbers
- Evacuation drills
- Desktop assessment
- Environmental controls & PPE

Desktop assessments require site personnel, responsible for testing the plan, to select a scenario from the hazard and impact register (table 2) and ensure that all the required controls for the scenario are in place. During the desktop assessment environmental control and PPE equipment supplies should be inspected to ensure that they are functional and that there are enough materials to ensure that emissions relating to the scenario can be controlled effectively and safely.

A large green triangle pointing downwards from the top-left corner of the page, covering the bottom-left portion of the document.

Appendix A - Emergency Contact Details

Salt Ash Emergency Management Contact List


❖ **UPON HEARING THE EMERGENCY ALARM, YOU WILL NEED TO EVACUATE:**

❖ **ASSIST ANYBODY IN IMMEDIATE DANGER ONLY IF SAFE TO DO SO.**

EMERGENCY NUMBERS FOR POLICE, FIRE, AMBULANCE – 000

Emergency Services	Comments / links	Phone	
Police	Local Contact - Lemon Tree Passage	4982 4753	
Police	Local Contact - Raymond Terrace	4983 7599	
Police	Local Contact – Nelson Bay	4981 1244	
Fire and Ambulance	Emergency	000	
Hospital	Local Contact - Mater Hospital	4921 1211	
Hospital	Local Contact – John Hunter Hospital	4921 3000	
Hospital	Local Contact – Tomaree Community Hospital, Nelson Bay	4984 0700	
SES	Emergency Contact Only	132 500	
SDS	Emergency Advice: ACOHS ERS (24 Hours)	1800 638 556	
WorkCover	Emergency Contact & Advice	131 050	
Port Stephens Council	Raymond Terrace Office	4988 0255	
Poisons Information	24 Hour Telephone Advice	131 126	
Elgas	Emergency Contact Only	1800 819 783	
Electricity	Ausgrid	131 388	
Hunter Water Corporation	General	1300 657 000	
EPA	Pollution Hotline	131 555	
EPA	Newcastle	4908 6800	
Holcim Contacts	Full Name	Phone	Mobile
Quarry Manager	Peter Radziewic	(02) 4982 6399	0419 440 588
Quality, Safety & Environmental Coordinator	NA		
Safety Manager - NSW Aggs	Edward Richardson	(02) 42567241	0429 791 682
Environment Manager – AUS/NZ	Dozie Egeonu		0429557493
Operations Manager - N.S.W Aggs	Chris Hamilton	(02) 6656 8620	0429 790 213
Crisis Management Team	Full Name	Phone	Mobile
Quarry Manager	Peter Radziewic	(02) 4982 6399	0419 440 588

Emergency Leader	Peter Radziewic	(02) 4982 6399	0419 440 588
Communications Coordinators	Roslyn Merrick	(02) 4982 6399	0402 002 894
	Zoe Archard	(02) 4982 6399	0422 330 560
Additional Site Contacts	Contact Name	Phone	Mobile
Operations Coordinator	Rodney Harwood	(02) 4982 6399	0448 682 458
2 Way Radio Communications			
Salt Ash Plant – UHF Channel 27		Anna Bay Site – UHF Channel 27	
Northern Dune Site – UHF Channel 21			

A large green triangle is positioned in the bottom-left corner of the page, pointing towards the top-right. The text is written in white within this triangle.

Appendix B - Pollution Incident Response Test Checklist

Date: 16/11/2023

Site: Northern Dune Site Not Operational; Spill Response Discussed at site toolbox Meeting.

Address: Off Oyster Cove Road and Rutile Road Oyster Cove

Pollution Incident Scenario: Dozer Hydraulic Oil Spill from broken hose

Instructions

1. Select an Environmental Incident applicable to the site to test in a Pollution Scenario (this may include a major spill, equipment failure or breaches of license consent that may cause impacts onsite and to the surrounding community);
2. Using the scenario conduct a desktop review using the Test Checklist as a prompt to ensure that each component of the PIRMP is up to date;
3. Sign off the checklist, scan and send to the NSW Planning & Environmental Coordinator;
4. Planning & Environmental Coordinator will make amendments to the plans and submit these to the site managers for review and approval;
5. Site Managers to hold a tool box talk with staff on the details of the PIRMP and keep a copy of the PIRMP onsite for future reference.

Are all contact details within the plan current and up to date?	Phone Numbers	
	Currency	Updated Number
Individuals responsible for activating the plans and managing the response	Peter Radzievic 0419 440 588	
Individuals Authorised to Notify and Coordinate Relevant Authorities	Peter Radzievic 0419 440 588	
Emergency Services	000	
EPA	131 555 4908 6800	
The Ministry of Health via the local Public Health Unit	2278-2338	
WorkCover Authority	131 050	
Local Council	4988 0255	
Fire and Rescue NSW	000	

Additional Contacts relevant to the licensee's premises		
Other Organisations or agencies that need to be advised of the incident	Chris Hamilton 0429 790 213	

Environmental Hazards and Control Standards	Yes/ No	Actions
Are the descriptions of environmental hazards up to date?	Yes	
Are the potential and likelihood of incidents that could occur still correct and relevant to the site operations?	Yes	
Are the pre-emptive actions for risk management of the relevant activity correct and relevant to the site?	Yes	
Is there an inventory of pollutants (including quantities of pollutants onsite)?	No	No pollutants are kept on site
Is the listed safety equipment & PPE correct and up to date?	Yes	
Is there a map/s located onsite detailing the following; - The site and the surrounding area likely to be affected in the event of an incident - The Locations of storage/ holding points of pollutants - Stormwater drains and discharge points offsite	No	As indicated by site maps; Figure 1 Northern Dune Site Figure 2 Oyster Cove site
Are the nature and objectives of staff training set out in the plan?	Yes	
Are there details of mechanisms for providing early warnings and regular updates to the owners and occupiers?	Yes	Radio contact Channel 21
Is there a copy of the plan onsite and up to date?	Yes	

Has there been an evacuation drill in the last 12 months? YES **Date:**

Notes: There is no trail site evacuation conducted at the Northern Dune or Area 2 Sites. However, a review of this PRIMP and toolbox discussion on evacuation areas has taken place at the Salt Ash site.

Both sites are no longer in operation and are under rehabilitation.

Improvements to the Pollution Incident Response Management Plan:

1) No improvements or recommendations came out of the mock spill response from any of the participants.


Comments / Recommendations / Review

1.) Review descriptions of environmental hazards and update as required

Pollution Incident Response Test Checklist Assessor: Peter Radziewic

A handwritten signature in black ink, appearing to read "Peter Radziewic", written over a faint circular stamp.

Signed:

A large green diagonal shape that starts from the bottom-left corner and extends towards the top-right corner, covering the bottom-left portion of the page. The text is positioned within this green area.

Appendix C – Community Notification Strategy

- In an emergency if the spill has the potential to cause harm to the following stakeholders they will be contacted by telephone or alternatively in person.

Note: Both sites area no longer in operation and are under rehabilitation.

Neighbouring Business 60 Frederick Dr, Oyster Cove NSW 2318	Cove Marine	02- 4982 4832
SES (State Emergency Service) Port Stephens Unit 31 Rees James Rd, Raymond Terrace NSW 2324	State Emergency Service Port Stephens	000 13 25 00
SES - Newcastle Unit 75 Elizabeth St, Tighes Hill NSW 2297	State Emergency Services Newcastle	000 13 25 00